

# 14101 & 14201 Wireless Way, Oklahoma City, OK 73134



OFFICE SPACE FOR LEASE



- Built in 2001 as the corporate headquarters for a telecom company
- Highest quality materials and construction
- Large floorplates ranging from 16,000 SF to 22,000 SF
- State of the art building systems
- Excellent accessibility via the Lake Hefner Parkway, Memorial Road and the Kilpatrick Turnpike
- Proximity to restaurants and shopping
- Corporate office park environment
- Attractive architecture/design
- Balconies overlooking the park's lake
- 5.63 per 1,000 SF parking ratio (free surface parking)
- Back-up generator provides capacity to run both buildings indefinitely

	Building A	Building B	Building C	Building D
1st Floor	11,456 SF	22,845 SF	5,700 SF	2,644 SF
2nd Floor	Leased	21,885 SF		
3rd Floor	Leased	Leased		

\*Building C is set up as a conference center and Building D a call center.



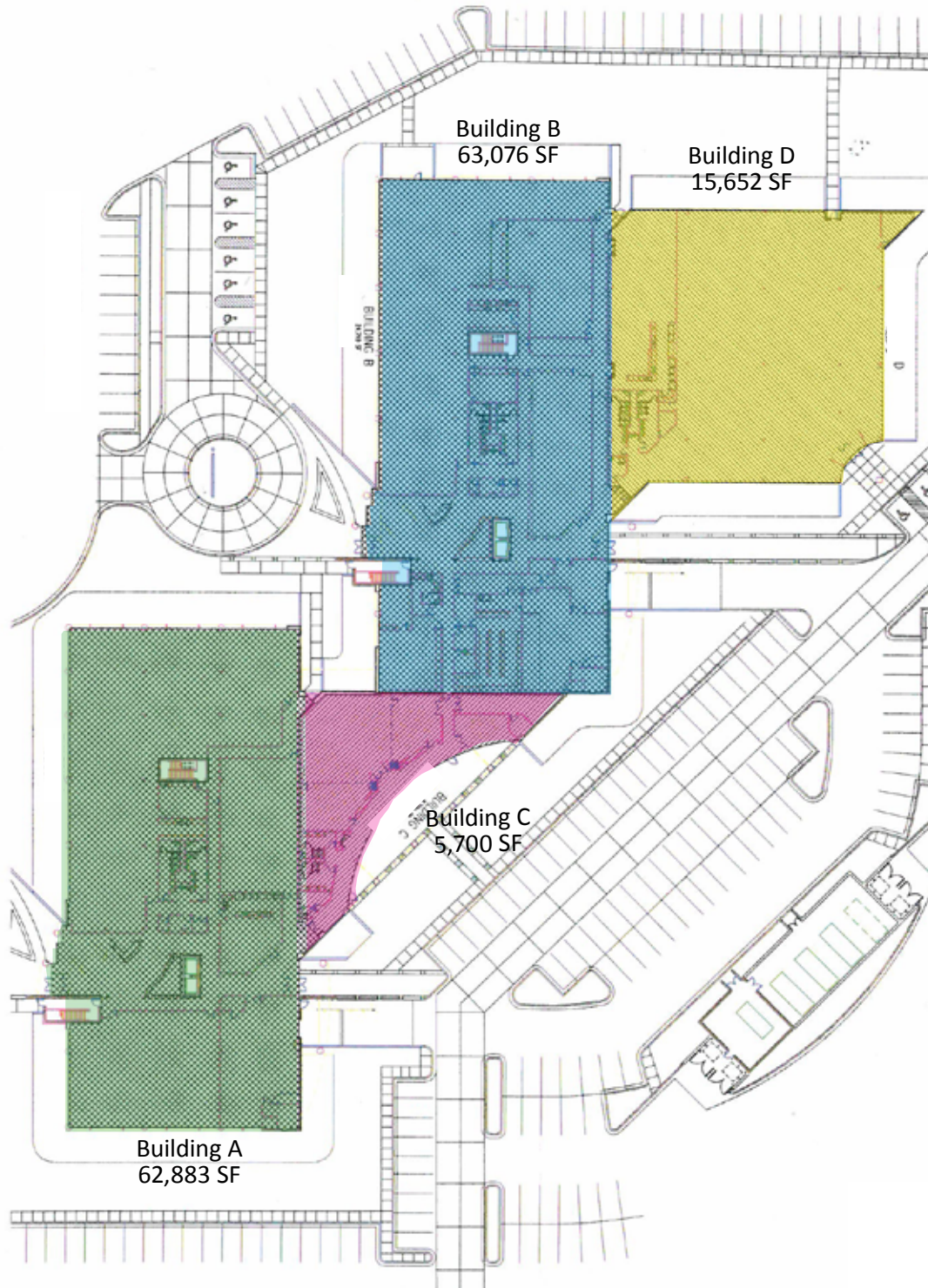
**Craig Tucker**  
405.239.1202  
ctucker@pricedwards.com

**Tom Fields**  
405.239.1205  
tfields@pricedwards.com

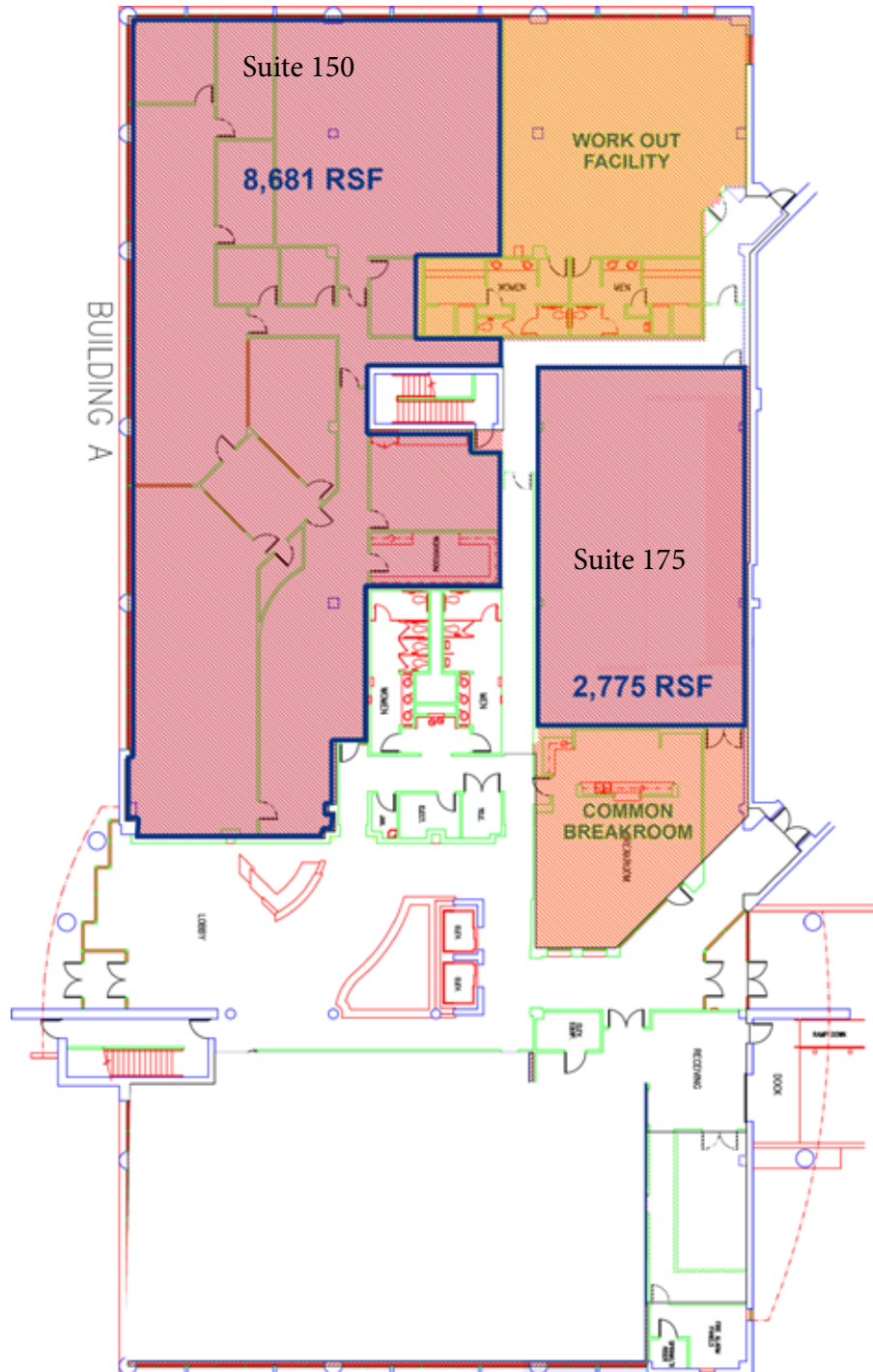
# 14101 & 14201 Wireless Way, Oklahoma City, OK 73134



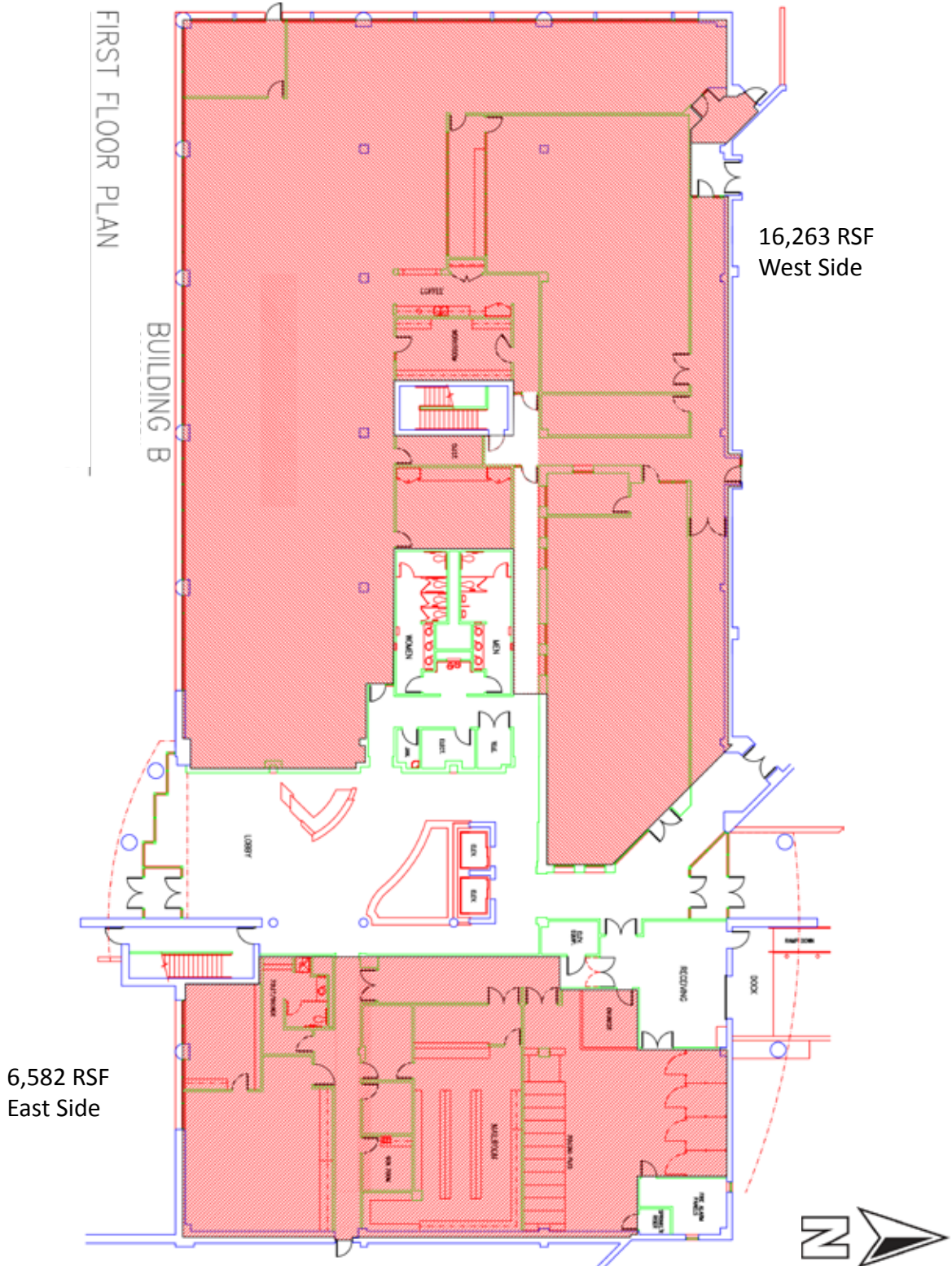
OFFICE SPACE FOR LEASE



Building A - First Floor

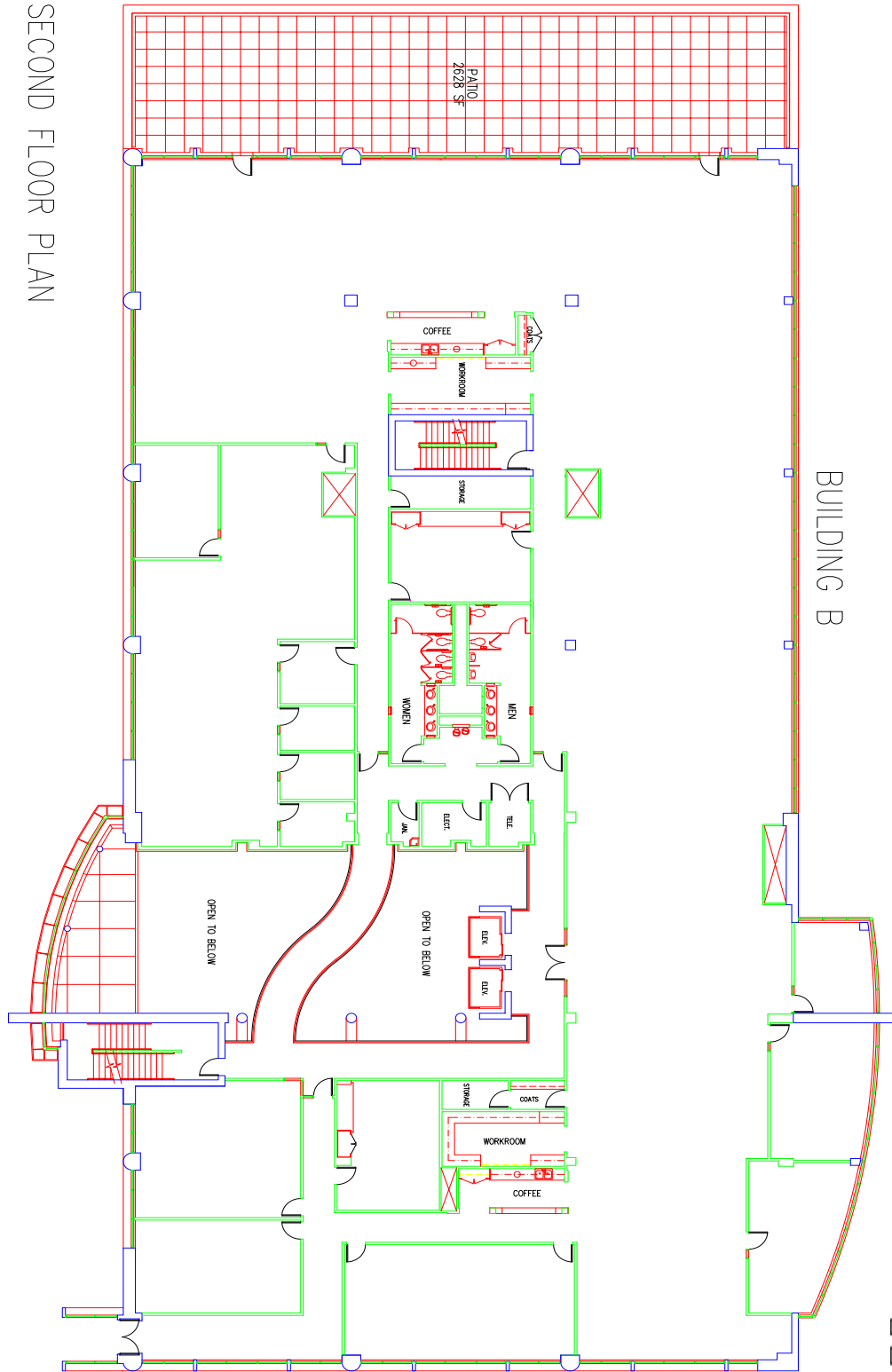


Building B - First Floor



Building B - Second Floor  
21,885 SF  
(does not include patio)

SECOND FLOOR PLAN

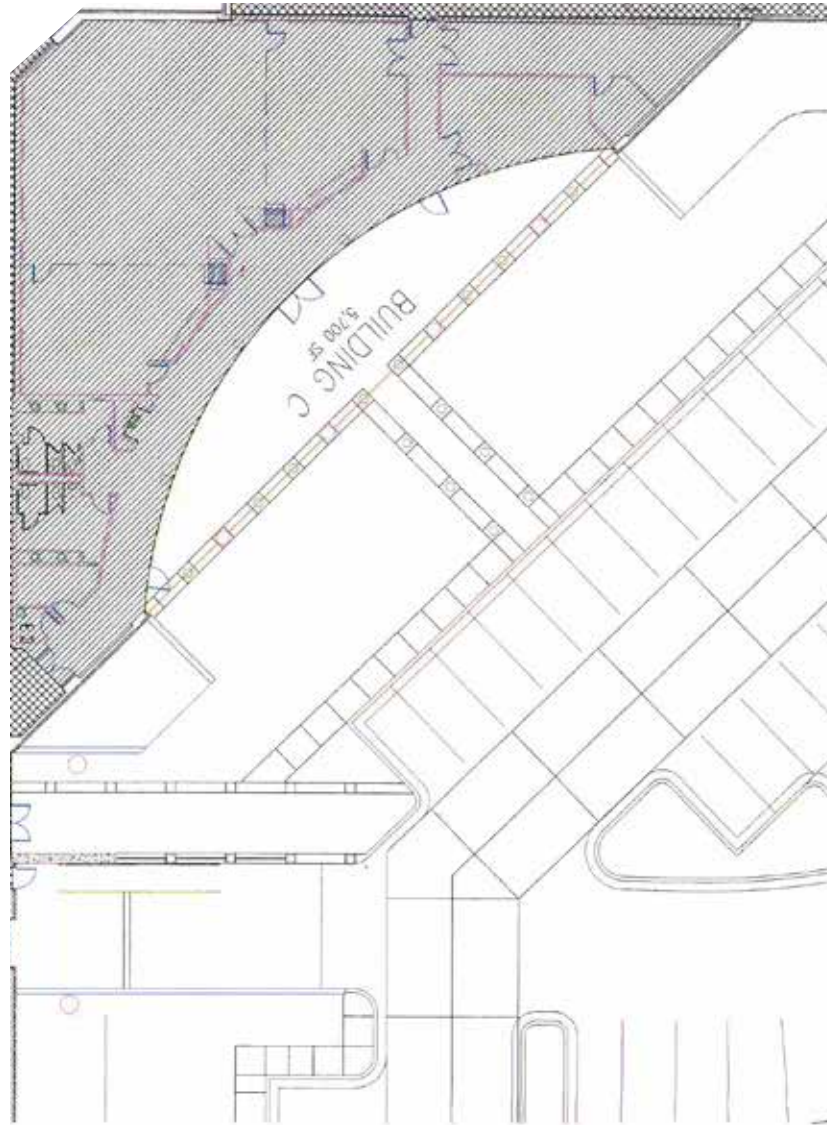


# 14101 & 14201 Wireless Way, Oklahoma City, OK 73134



OFFICE SPACE FOR LEASE

Building C  
5,700 SF



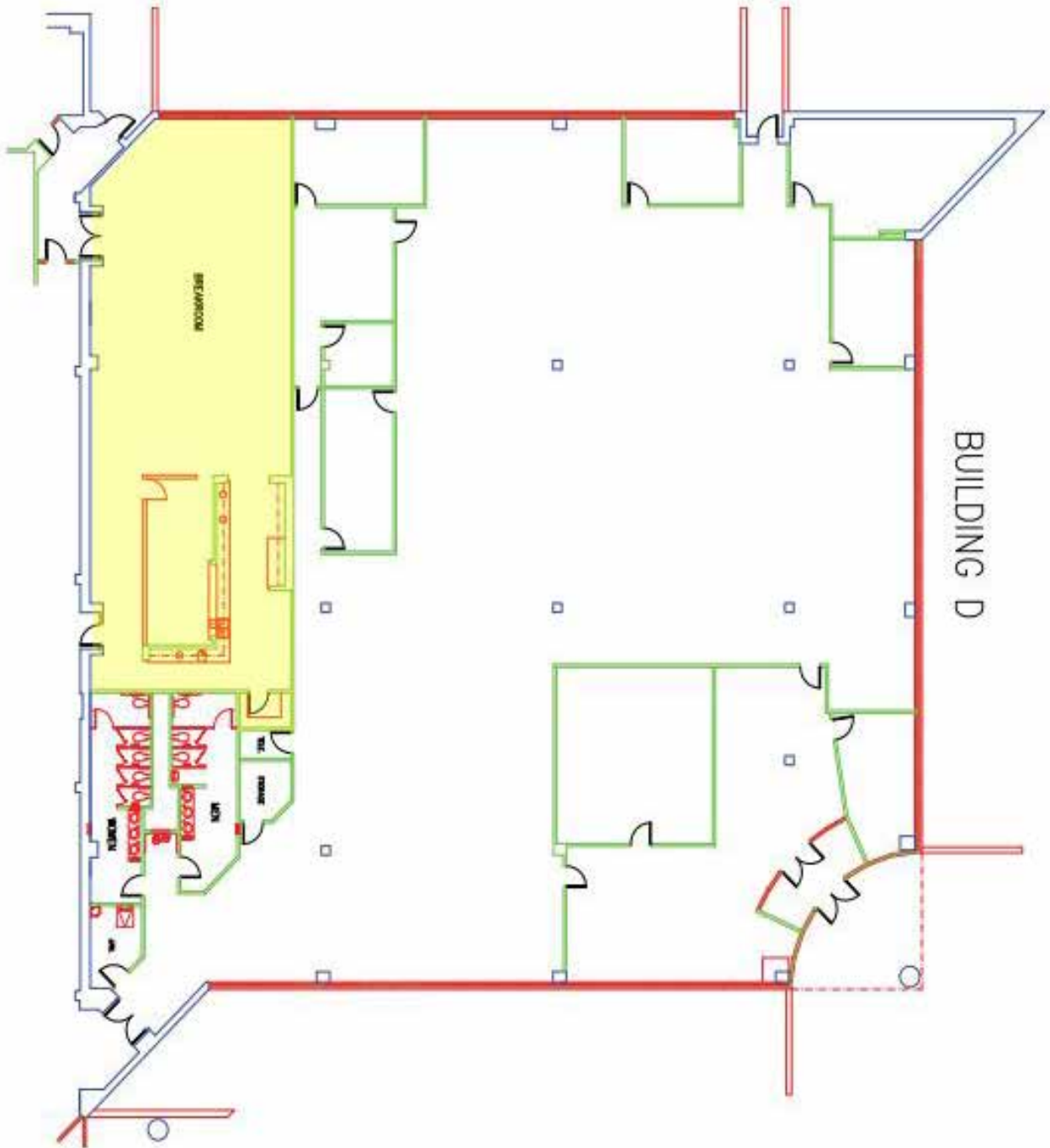
# 14101 & 14201 Wireless Way, Oklahoma City, OK 73134



OFFICE SPACE FOR LEASE

Building D  
± 2,644 SF

FIRST FLOOR PLAN



BUILDING D



# 14101 & 14201 Wireless Way, Oklahoma City, OK 73134



OFFICE SPACE FOR LEASE

